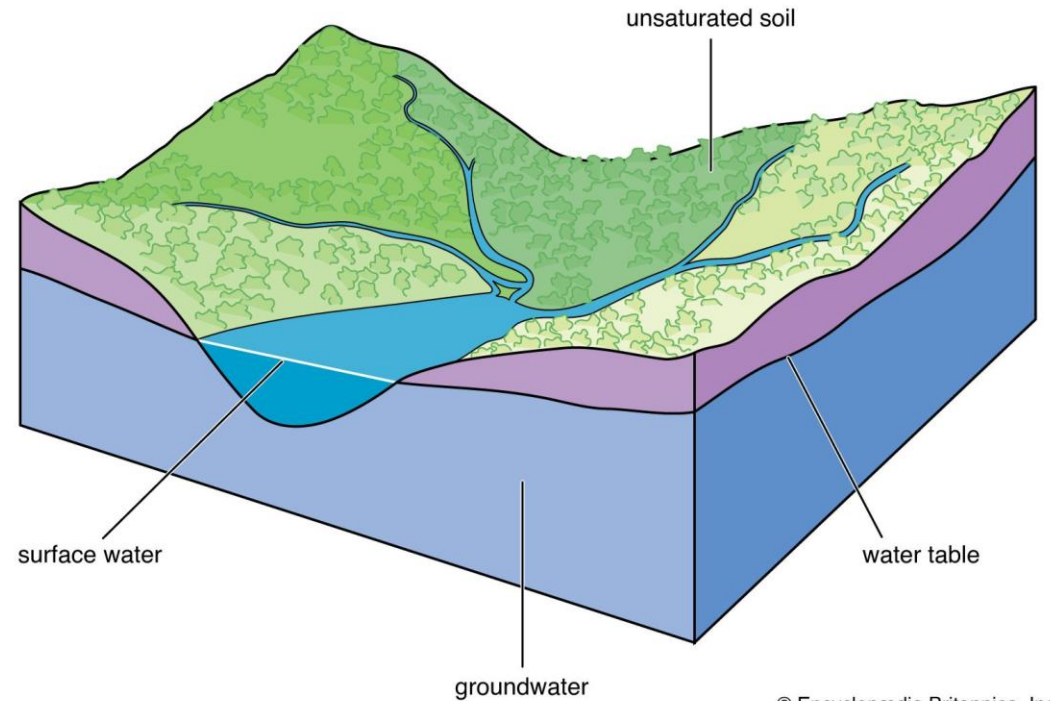
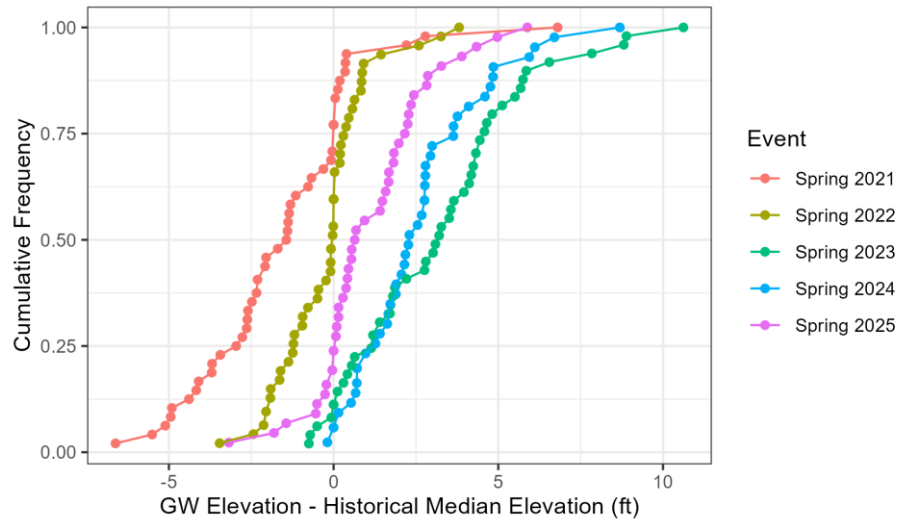


State of the Tahoe Valley South Groundwater Basin (WY 2025)



© Encyclopædia Britannica, Inc.

Mark Seelos
Water Resources Manager
3/19/2026

Outline



1. SGMA Refresher
2. Groundwater Supply and Demand
3. Basin Management Objectives
4. WY 2025 Accomplishments
5. Future Management of GSA

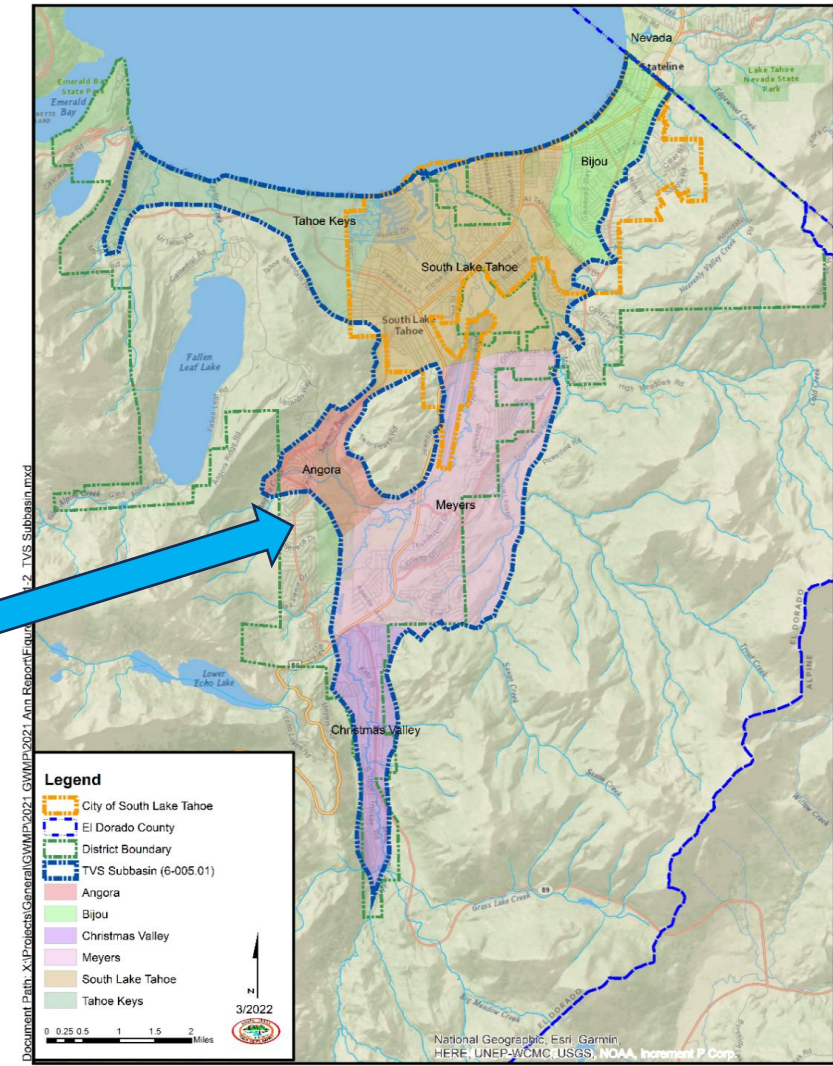
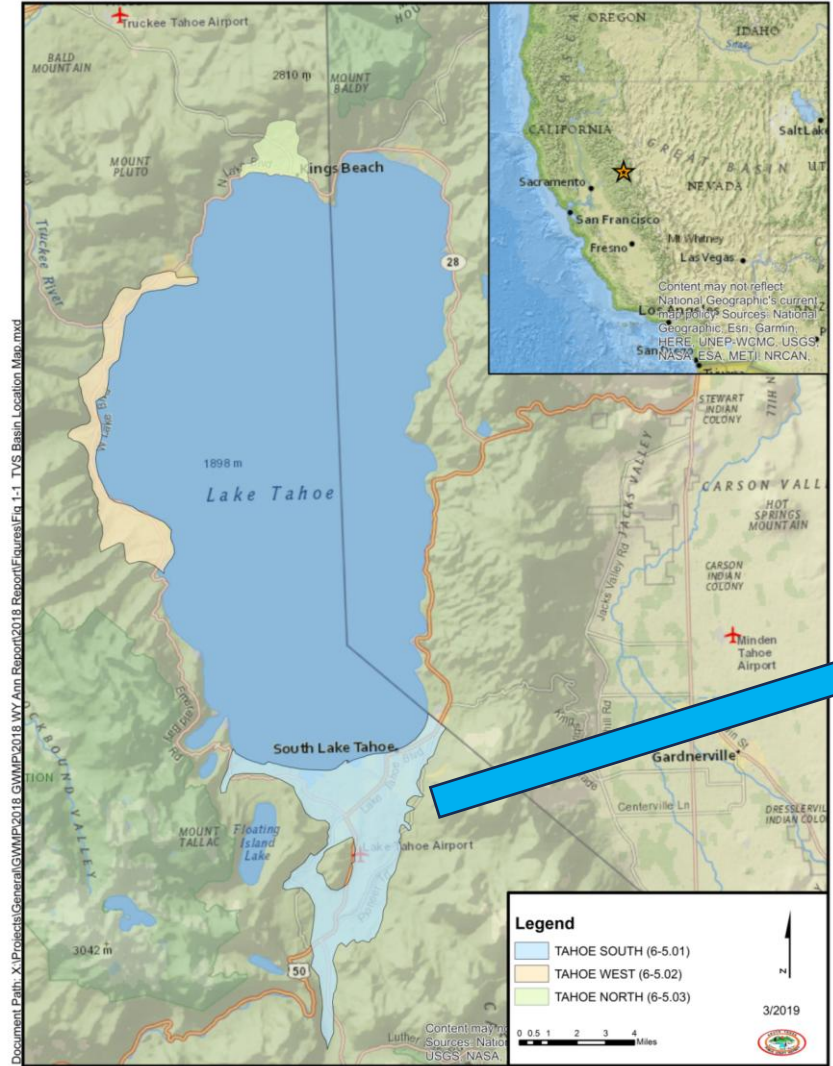
Sustainable Groundwater Management Act (SGMA)



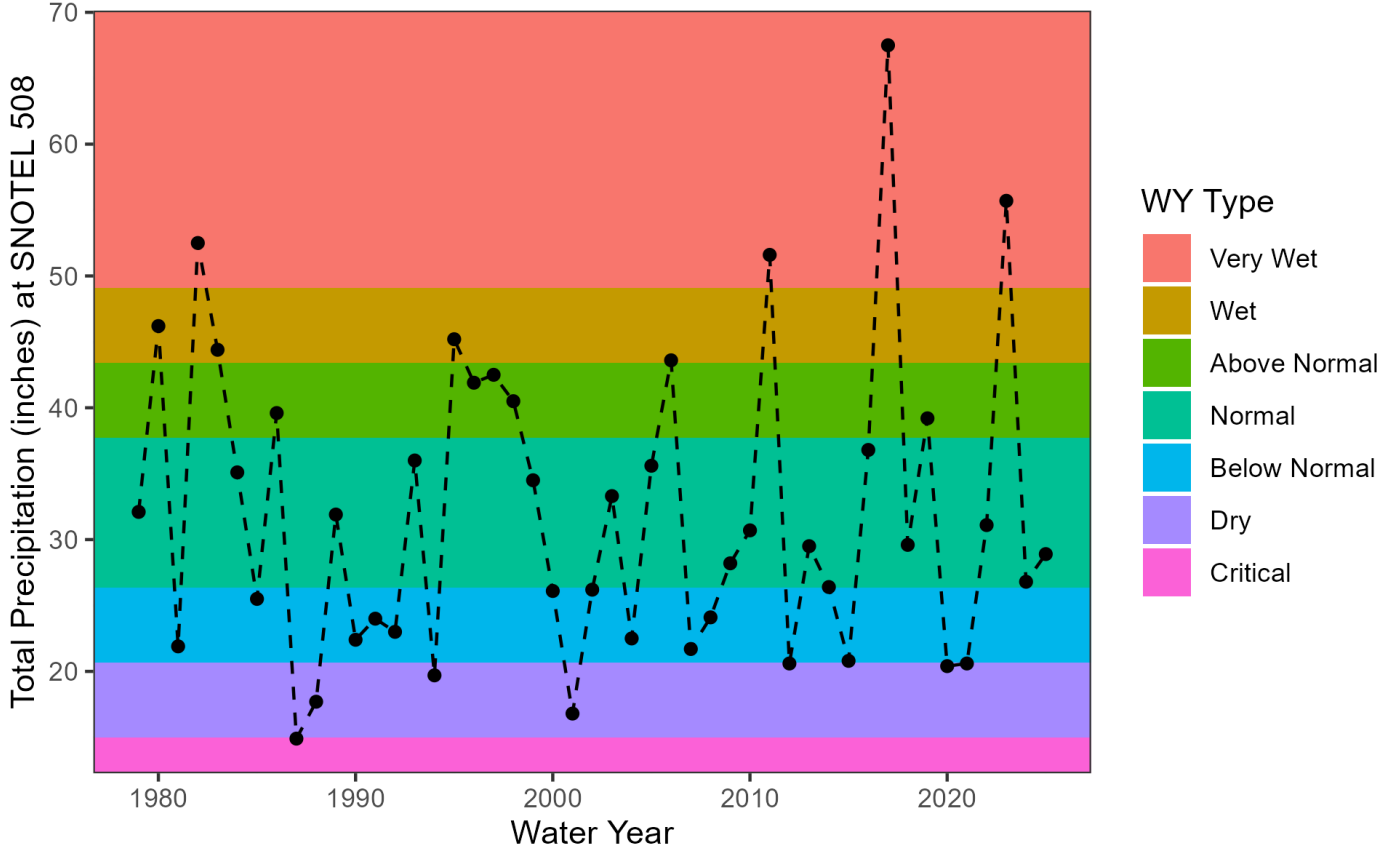
- Goal: achieve groundwater sustainability through local control.
- Basin Management Objectives to avoid “undesirable results.”
- Implementation plan to achieve BMOs



Tahoe Valley South Subbasin



Precipitation: WY 2025



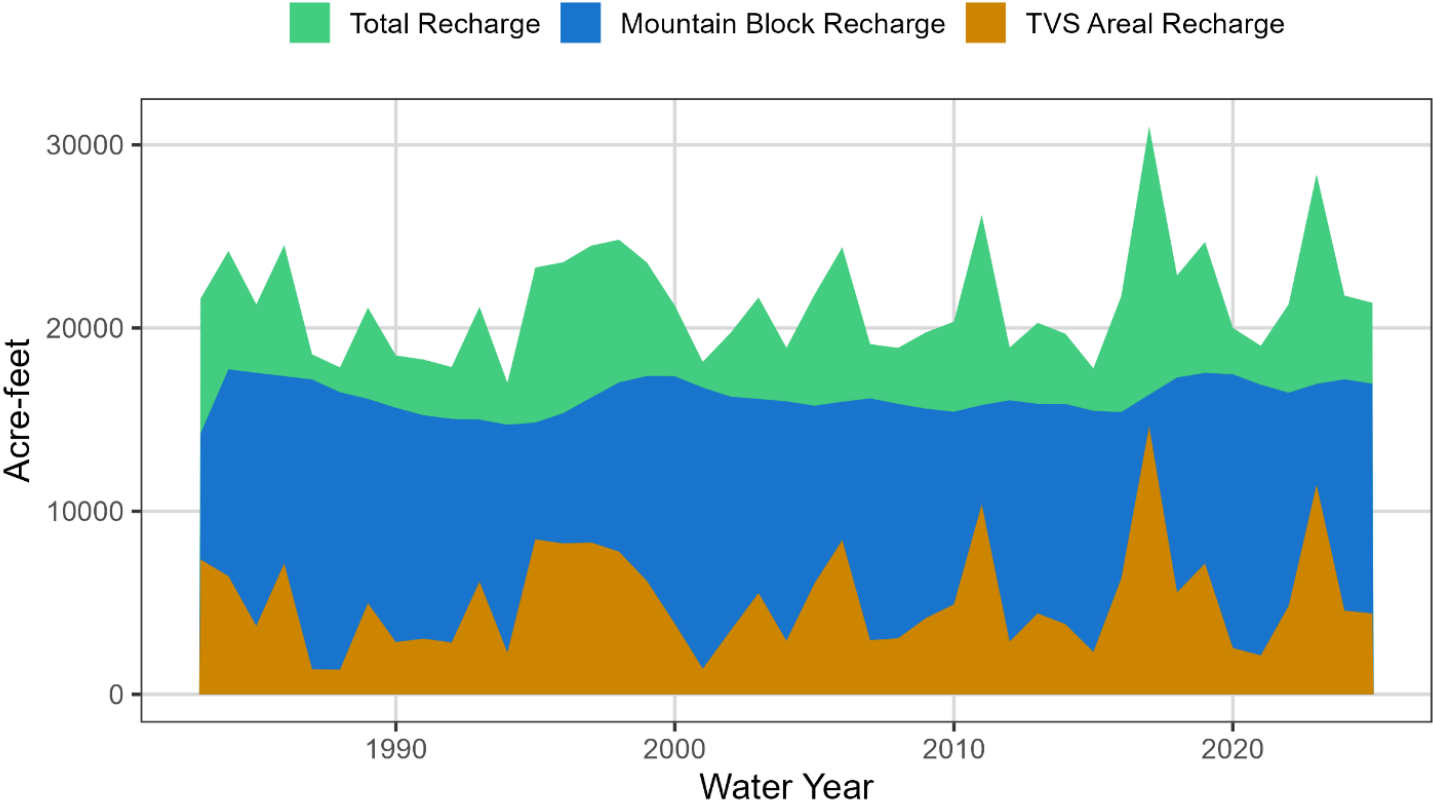
- Hagens Meadow SNOTEL used for WY Classification
- 29” in WY 2025



Groundwater Recharge



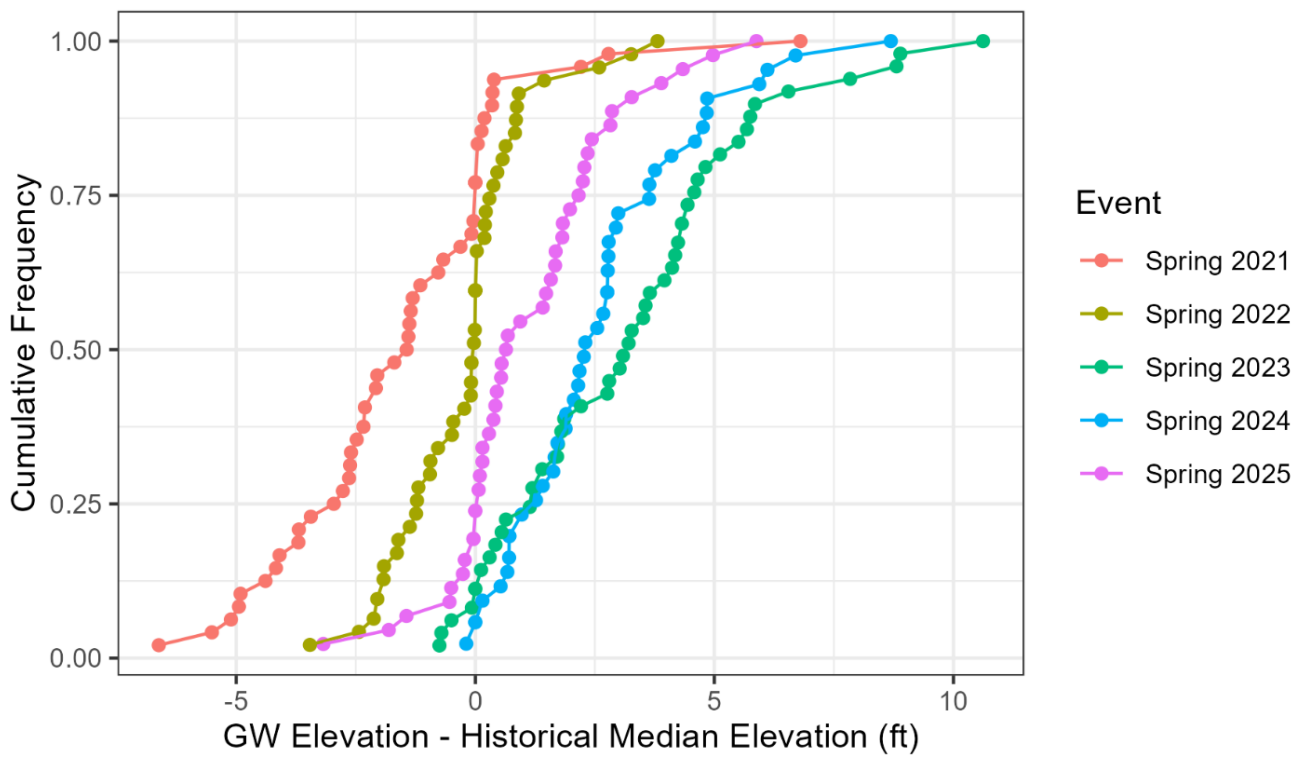
TVS Recharge Components by Water Year



Model Estimate:

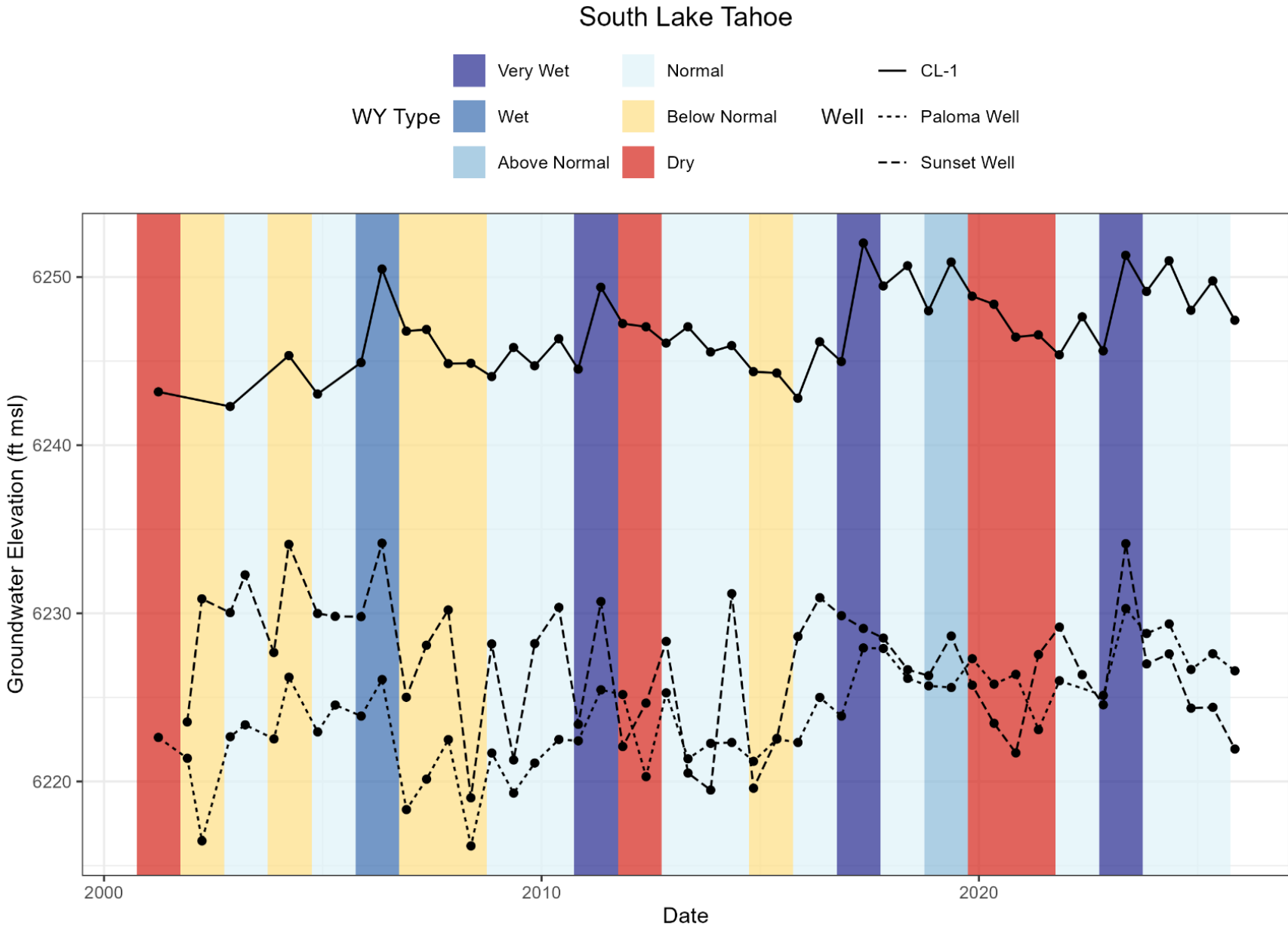
- 21,375 acre-feet (AF) of Groundwater Recharge in WY 2025
- Average production ~7,500 AF (all water systems)

Groundwater Elevations



- 2x annual groundwater level monitoring (October and May)
- 75% of monitoring wells were above their historical median groundwater elevation.
- Average increase of 5” in the last 5 years.
- 96% of wells are remaining constant or increasing.

Groundwater Elevations

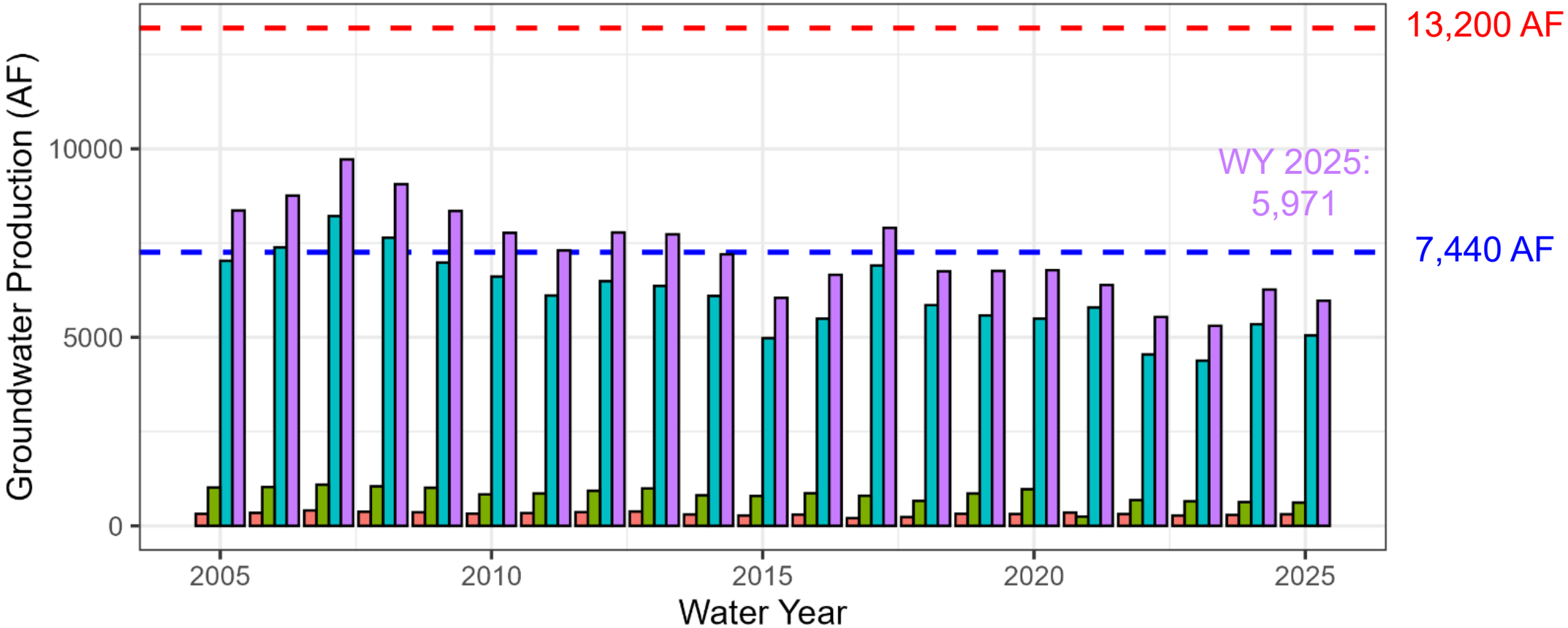


Groundwater Extraction

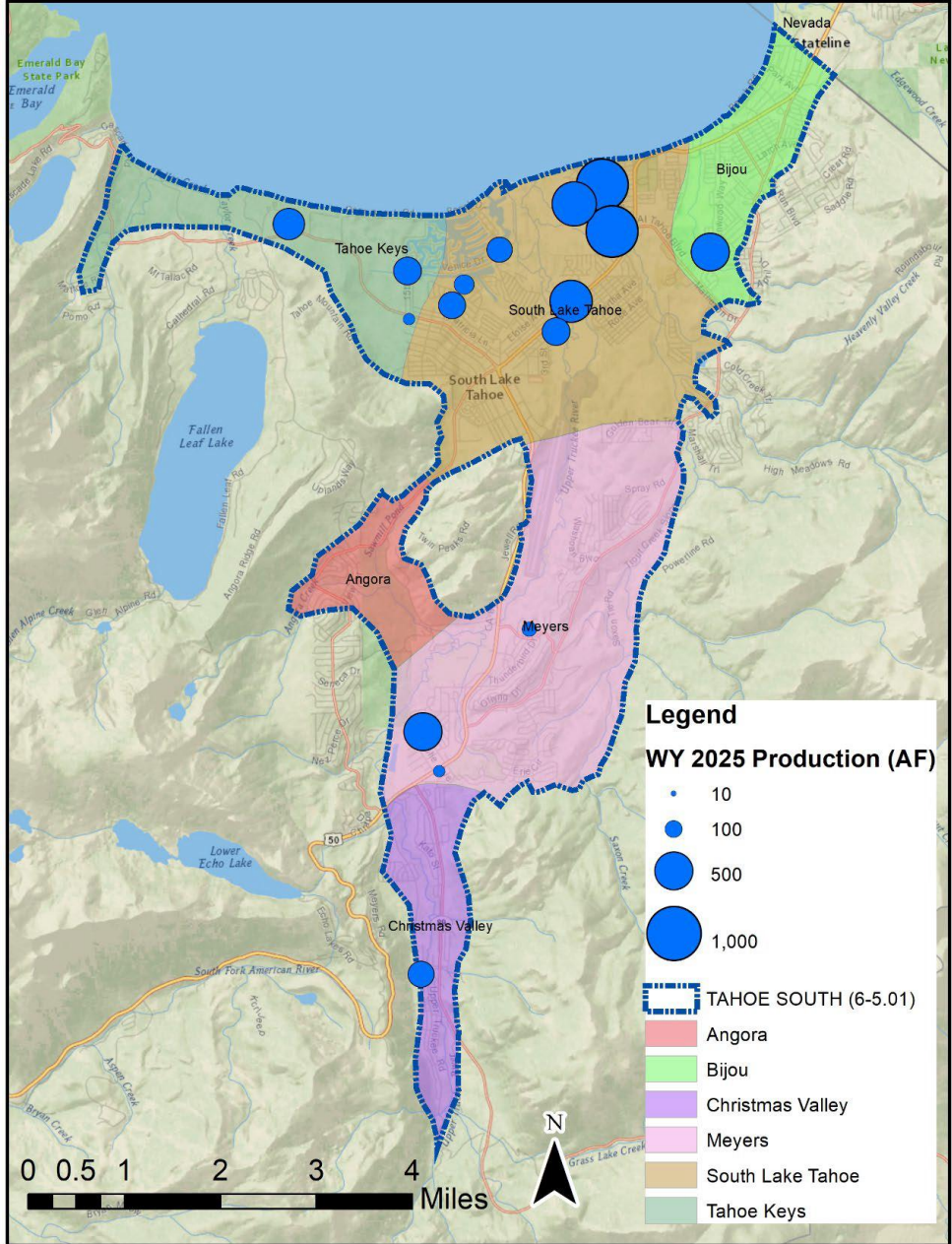


--- CWS Average --- Sustainable Yield

Purveyor LBWC TKWC STPUD CWS Wells



Extraction vs. Consumption



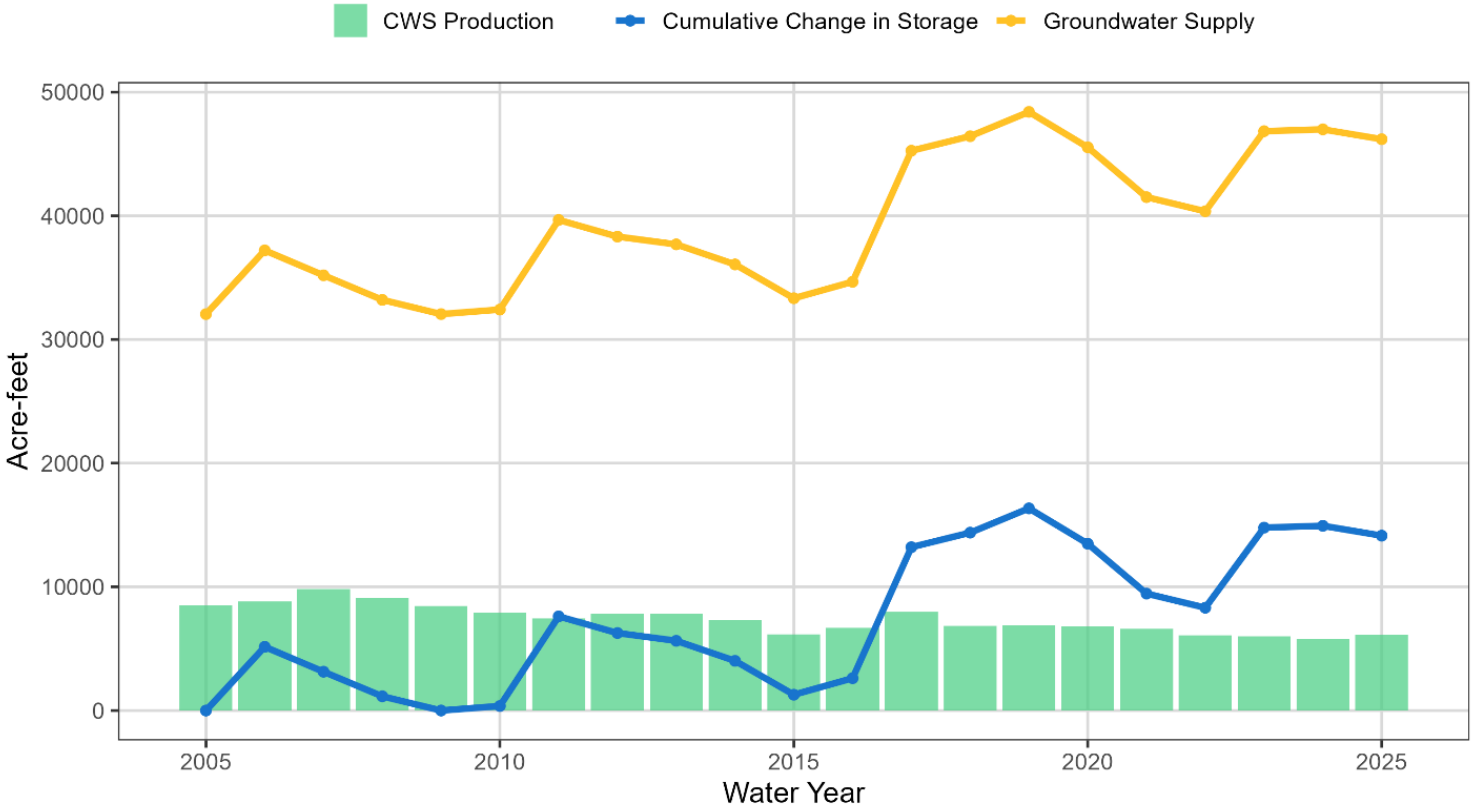
Use Type	Volume, AF
Single Family	2,092
Multi-Family	716
Commercial	1,429
Mutual Aid	0
Losses	814
Total	5,051

District Losses: ~16%

Groundwater in Storage



TVS Groundwater Supply



Model Estimate:

- Storage decreased by 795 AF in WY 2025.
- 46,191 AF of available storage. (>6 years of pumping need)

Basin Management Objectives



BMO	Description	Status
1	Maintain a sustainable long-term groundwater supply.	Met Thresholds
2	Maintain and protect groundwater quality.	Met Thresholds
3	Strengthen collaborative relationships [...]	In Progress
4	Integrate groundwater quality protection into local land use planning activities.	In Progress
5	Assess the interaction of water supply activities with environmental conditions.	Met Thresholds
6	Convene an ongoing Stakeholder's Advisory Group (SAG) [...]	In Progress
7	Conduct technical studies [...]	In Progress
8	Identify and obtain funding [...]	In Progress

WY 2025 Accomplishments

1. Met monitoring requirements.
2. Completed annual model run.
3. Met DWR reporting requirements (WY 2025 Annual Report)
4. Progressed with groundwater model update and completed GDE Monitoring Plan.
5. Shifting management responsibility to EDCWA.

Future Management of GSA



- EDCWA agreed to take over management of GSA
- STPUD transitioning to contributor role.
- Met 3/12/2026 to discuss hand off.
- Resolve to withdraw as GSA (revoking 2986-15 and 3055-17)
- Cancel or Amend existing MOU with EDCWA related to GSA.
- Long term goal: achieve downgrade to low priority basin.

Questions?

